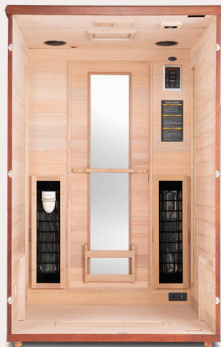
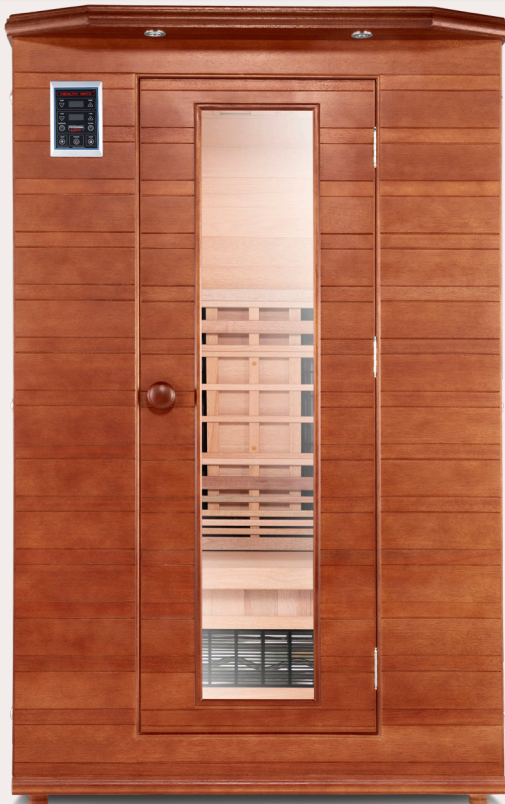


Enrich 2

True Full Spectrum



HEALTH MATE SAUNA



Full Spectrum Heat

Tecoloy medical-grade heaters using patented technology combine with LED panel for near-, mid- and far-infrared heating and 360-degree coverage

Chromotherapy

High output, 96-diode LED panel provides customizable 9-color near-infrared therapy for enhanced health advantages

Maximum Heat Retention

Generous wood exterior and interior construction with limited yet ample see-through glass ensures less than 5% heat loss for optimal benefits

Ergonomic Bench

Comfort enhancing reversible bench features adjustment for sitting or reclining

Low EMF

8 heaters plus electrical and controllers feature safe electromagnetic frequency levels as verified by outside third parties

Bluetooth

Top performing built-in sound system syncs with any compatible smartphone for added relaxation and enjoyment

Eco-Friendly

Solid eucalyptus wood from sustainable sources for maximum quality and lasting durability plus energy-efficient design

SPECIFICATIONS



Electrical

120V
1810 Watts
15 amps
NEMA 5-15P

Interior

Width: 45"
Depth: 39.5"
Height: 71.5"

Exterior

Width: 47.25"
Depth: 43.5"
Height: 77"

Capacity

1-2 People

www.healthmatesauna.com